



UPG (Ultimate Positioning Group)
AllTerra
SITECH Construction Systems
SITECH Solutions
SITECH New Zealand
BuildingPoint Australia
BuildingPoint New Zealand
Information Alignment
Vantage Australia
CivilPro



Contents

3	How we started
4	Trimble
6	Our Commitment
8	Customer Service
10	Capability
12	UPG (Ultimate Positioning Group)
14	SITECH
16	BuildingPoint
18	AllTerra
20	Information Alignment
22	Vantage
24	CivilPro
26	Our Partners





How We Started

The genesis of our business dates back to 1888 when Alphonse Herga opened a watch makers business in Brisbane. From the early 1900's the Group has been run by the Bright Family and a fourth generation of the family is still leading the business today.

For well over 130 years the Group has been involved in the sales and support of Surveying Instruments in Australia. In the last 30 years we have grown from the core Surveying business to include a number of multi-faceted technology businesses encompassing hardware, software solutions, consulting, and solutions development.

We are proud to be the exclusive Trimble distribution Partners for Geospatial, Civil Engineering and Construction Solutions within our Territories.

Headquartered in Brisbane, we have grown to include 15 Regional Offices and more than 280 employees, Servicing Australia, New Zealand, and Papua New Guinea.



Trimble is an industrial technology company, concentrated on helping the world work, better. Our technology enables jobs to get done more precisely and accurately so you can build, construct, grow and move the things we need to live our lives and build future communities.

Transforming the way the world works

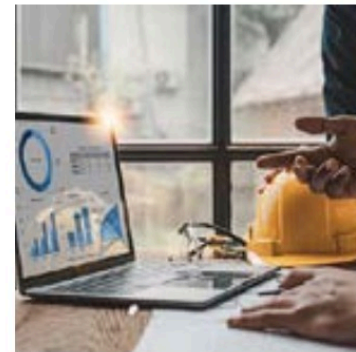
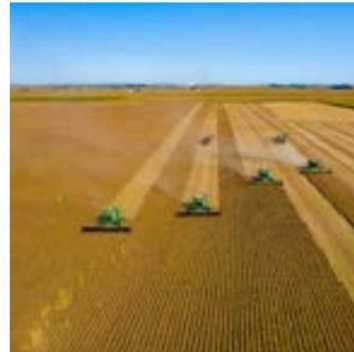
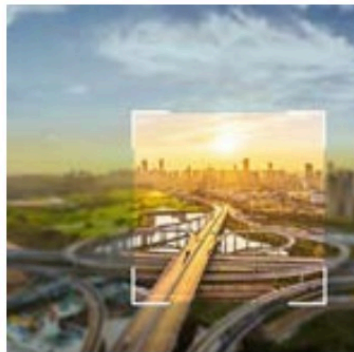
By connecting the physical and digital worlds through hardware, software, and services across [agriculture](#), [construction](#), [geospatial](#), [buildings](#), and [transportation](#). Trimble creates and provides solutions that enable our customers to do their jobs better - more successfully, efficiently, and safely, all while saving money.

Shaping a sustainable future

At Trimble, we are transforming the way the world works to shape a sustainable future for our customers, our employees and our planet.

Our sustainability priorities are integrated into our strategy

It's threaded throughout our products and our culture. It guides our innovations and investments. It drives us to build resilience for our company, to empower our people, and to lead with integrity in all that we do.



What Sets Us Apart?



Construction

Deliver projects with more control through connected solutions that improve productivity, quality, transparency, safety, and sustainability.



Geospatial

Transform data into real-world intelligence using the most progressive, reliable, and accurate tools in precision technology.



Government

Provide the services constituents expect today and tomorrow with solutions that can help you manage projects from conception to completion.



Agriculture

Farming is hard. The power of Trimble agriculture technologies combines simplicity with innovation to make it easier.



Natural Resources

Increase efficiencies, reduce costs and step up sustainability commitments with intelligent solutions that deliver actionable information.



Infrastructure

Plan, design, build, and operate projects and programs with a suite of products and services that help you make informed decisions and meet budget, sustainability and community resilience goals.



Transportation

Create a more connected supply chain with solutions that improve decision-making and productivity while shrinking environmental impact.



Utilities

Achieve resilient and sustainable utility networks by driving efficiencies in investment planning, design, construction, operations, and maintenance.



Our Commitment

HEALTH & SAFETY

Throughout the Group we integrate our core responsibilities of Safety, Environment and Quality into every part of our day-to-day operations. We are passionate about maintaining the health and safety of our people, our customers, and visitors.

Under the direction of our senior safety managers you can be assured that all processes undertaken on your behalf will be done to the highest of safety standards.

ENVIRONMENT

The Group, together with Trimble, recognises that climate change is a significant global challenge and we are committed to continually improving the environmental performance of our business operations.

It is our policy to ensure that any work carried out is within the scope of the business and is conducted in an environmentally aware and responsible manner and complies with all applicable regulatory requirements.

QUALITY

It is Company policy to offer and deliver products and services featuring quality, reliability and value, consistent with the needs of our customers. This is achieved through the application of an effective business management system.

We continue to adopt improvement of work methods and processes, respond constructively and promptly to product quality and service issues, ensure agreed commitments are delivered and always achieved if not exceeded, and with the support of our suppliers provide exceptional customer value through continuous improvement.

Customer Service

Customer support is more than just providing answers; it's an important part of the promise the Trimble brand makes to its customers.

Today's customer service goes far beyond the traditional telephone support agent. That's why we're also available via email, web, and social media. We have implemented dedicated customer service numbers across the board, supported by a team with well over 100 years combined experience in the Agriculture, Civil Construction, Geospatial, Mining, and Building industries.

Across the group we continue to provide our clients with the level of service and support they expect and deserve.

- | | | | | | |
|--|--|---|--|---|---|
| <ul style="list-style-type: none">• UPG
1800 800 UPG
1800 800 874
upgsolutions.com | <ul style="list-style-type: none">• SITECH Construction Systems
1800 SITECH
1800 748 324
sitechcs.com | <ul style="list-style-type: none">• SITECH Solutions
+61 2 6788 2155
sitechsolutions.com.au | <ul style="list-style-type: none">• BuildingPoint
1800 900 BPA
1800 900 272
buildingpoint.com.au | <ul style="list-style-type: none">• Information Alignment
+61 8 9205 6300
inapl.com | <ul style="list-style-type: none">• Vantage Australia
1800 4Vantage
1800 482 682
vantage-au.com |
| <ul style="list-style-type: none">• AllTerra
0800 AllTerra
0800 2558 3772
allterra.co.nz | <ul style="list-style-type: none">• SITECH Construction New Zealand
0800 4 SITECH
0800 4748 324
sitechnz.co.nz | | <ul style="list-style-type: none">• BuildingPoint NZ
0800 276 468
buildingpoint.co.nz | <ul style="list-style-type: none">• CivilPro
1800 900 CPS
1800 900 277
civilpro.com | |







Capability to Service Australia, New Zealand, and Papua New Guinea

Mobile workforce



15 Office Locations

Brisbane, Rockhampton,
Townsville, Sydney, Melbourne,
Adelaide, Darwin, Tasmania, Perth,
New Zealand



Over 280 Staff

Support, Sales, Service, Surveying,
Technology, IT, Logistics

An unparalleled portfolio of equipment and technology solutions, unmatched after-sales service and 130+ years supporting our customers

Capability

Over the last few years we have implemented substantial change to drive a culture where safety and customers are forefront in our organisation. We have a genuine desire to understand our customers' needs enabling us to deliver the solutions they want, when they want them, wherever they are.

We are proud of our 130 year legacy of supporting our customers and our reputation for meeting commitments. We have the most comprehensive range of Trimble software and solutions to support you.

We have high quality people, second-to-none service and sales facilities combined with rental and maintenance solutions, all forming part of an unmatched depth of offering.

By genuinely understanding our customers' needs we know we can bring all this together to assist our customers achieve success.

UPG

(ULTIMATE POSITIONING GROUP)

As an established Trimble Distributor with offices throughout Australia, we provide solutions that facilitate high-quality, productive workflows and information exchange, driving value for a diverse customer base of surveyors, engineering and GIS service companies, governments, utilities and transportation authorities.

Using Trimble Solutions, UPG brings innovative technology to market, enabling organisations to capture the most accurate spatial data and transform it into intelligence to delivery increased productivity and improved decision-making. Trimble technologies include integrated sensors, field applications, real-time communications and office software for processing modelling and data analytics.

Proven technology is backed up with our expertise through Trimble Certified trainers, our efficient and knowledgeable technical support teams, our in-house software development team and quality service and support with our Trimble Certified Service staff.

upgsolutions.com

1800 800 UPG





**With Trimble Geospatial, You
Can Make Your Mark with
Confidence**



Trimble

Authorised Distribution Partner

SITECH

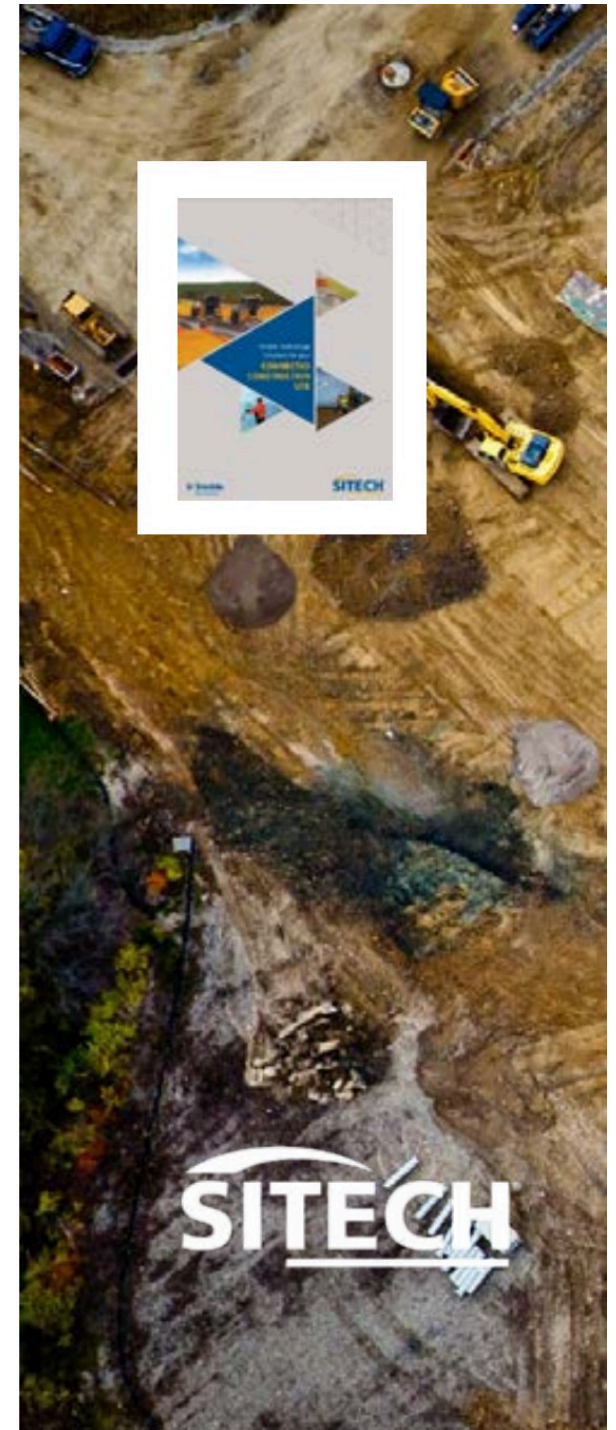
SITECH is your Trimble Authorised Dealer for Queensland, New South Wales, Victoria, South Australia, Northern Territory, Tasmania, and New Zealand, distributing site-wide solutions to civil engineering and mining contractors. Our experienced teams understand how to apply innovative technology to effectively solve the biggest challenges on your job site and will work with you from concept to completion to understand and support your specific project needs.

Trimble technology is recognised globally as a leader in accuracy, reliability and improving productivity.

All our technology is enabled by Trimble's Connected Site Solutions which allows all data to be electronically synced between the field and the office, increasing productivity and accuracy. Whether you work in general construction, earthmoving, civil engineering or mining, the solutions we can offer you at SITECH give you more control and understanding of your job site.

Our rental program provides a cost-effective opportunity to confirm the competitive advantages of the newest state of the art technology, helping you to make decisions that fit your goals, your time-frame and your budget

sitechcs.com	sitechnz.co.nz	sitechsolutions.com.au
1800 SITECH	0800 4 SITECH	+61 2 6788 2155





Get the job done right



Trimble
Authorised Dealer

BuildingPoint

From the office, to the job site, and everywhere in between

As the exclusive Partner of Trimble's Buildings Construction portfolio, BuildingPoint is part of a global network of Trimble partners specialised in supporting customers with the adoption of the Trimble innovative hardware and software solutions. Trimble Buildings is dedicated to making the construction industry significantly more productive, efficient and safer through advanced, accessible, intuitive technologies.

Our portfolio of synergistic hardware, software and service offerings streamlines communication and collaboration throughout the Design-Build-Operate (DBO) life cycle, with targeted solutions that enable Architects, Structural Professionals, MEP Trades, General Contractors, Construction Managers and Building Owners to realise greater efficiency and profitability.





Design



Detail



Fabricate



Construct

Products for Every Phase of Your Business



ALLTERRA

With over 30 years of experience in the survey industry throughout New Zealand and the South Pacific, AllTerra (formerly Geosystems) specialises in providing geospatial technology solutions and innovation across a range of industries including land surveying, construction, engineering utilities and local government.

AllTerra is Trimble's globally trademarked brand for distribution partners focusing on delivering Trimble's world-leading technology to surveyors and geospatial professionals. AllTerra partners are closely aligned with Trimble's long-term vision of Transforming the Way the World Works by being the conduit to provide Trimble's leading hardware, software and services, as well as technical and business consultation that extends this vision.

Additionally important is the role AllTerra partners play in identifying opportunities in their given markets and communicating these to Trimble in a manner that will insight action. As our customer, user and colleague, we expect that you will soon begin to realise the value of this new approach to distribution.

allterra.co.nz

0800 ALLTERRA





**With Trimble Geospatial, You
Can Make Your Mark with
Confidence**



Information Alignment

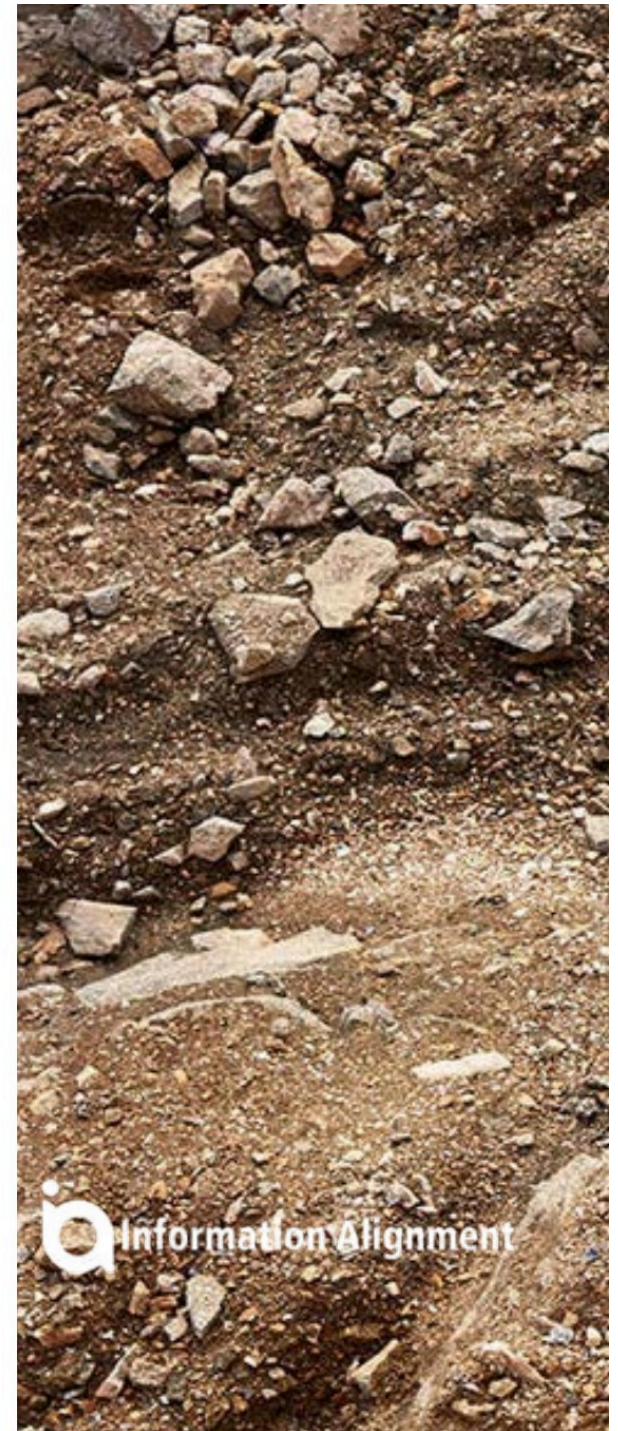
Providing information systems for enterprise-wide monitoring and management of mining and ore processing operations, Information Alignment collect and integrate data across functional areas and sources, regardless of data origin. This capability combined with Trimble's geospatial solutions can provide increased mine productivity through the aggregation, analysis and presentation of information that enables better decision making for mining customers.

Australian company IA develops a suite of systems for mine production, processing operations, human resource management and a web platform for access and administration.

IA offers an enterprise-level system that unlocks data and metrics from across functional areas for a complete view of mine productivity and profitability, for decision makers across planning, operations and finance. Our vision is to make mines more productive, profitable and safer with improved reporting and use of geospatial technology.

inapl.com

+61 8 9205 6300



A high-angle photograph of two miners in a quarry. They are wearing brown jackets, high-visibility yellow-green vests, and hard hats (one yellow, one white). They are both pointing their white-gloved hands towards a tablet held by the miner on the right. The ground is covered in loose rocks and dirt. The text 'Experts in Mining Data and Management Systems' is overlaid on the left side of the image.

Experts in Mining Data and Management Systems



Vantage Australia

We are your local precision agriculture expert on the full suite of Trimble solutions, making precision technology work seamlessly across complex farming operations. Our team has an extensive skillset in all areas of precision agriculture, and is equipped to bring our industry-level technical expertise, customer service and support capabilities to your farming.

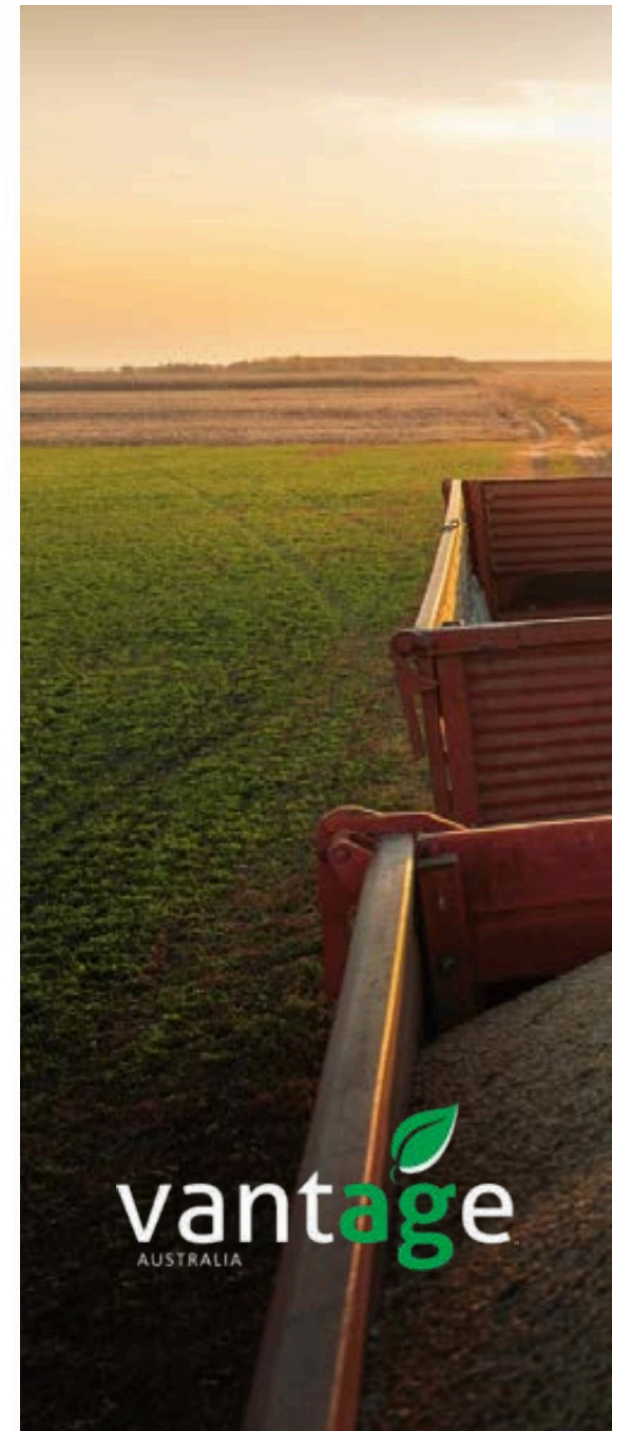
Farming is hard, but Trimble's ag technology can help make it easier. Through simplified workflows, Trimble's accurate easy-to-use technology maximises productivity and ROI.

Whether you're just getting started with guidance and steering or are on a mission to build a more comprehensive solution for your farming, Trimble has the tools and resources to connect every corner of your business.

Start your journey today.

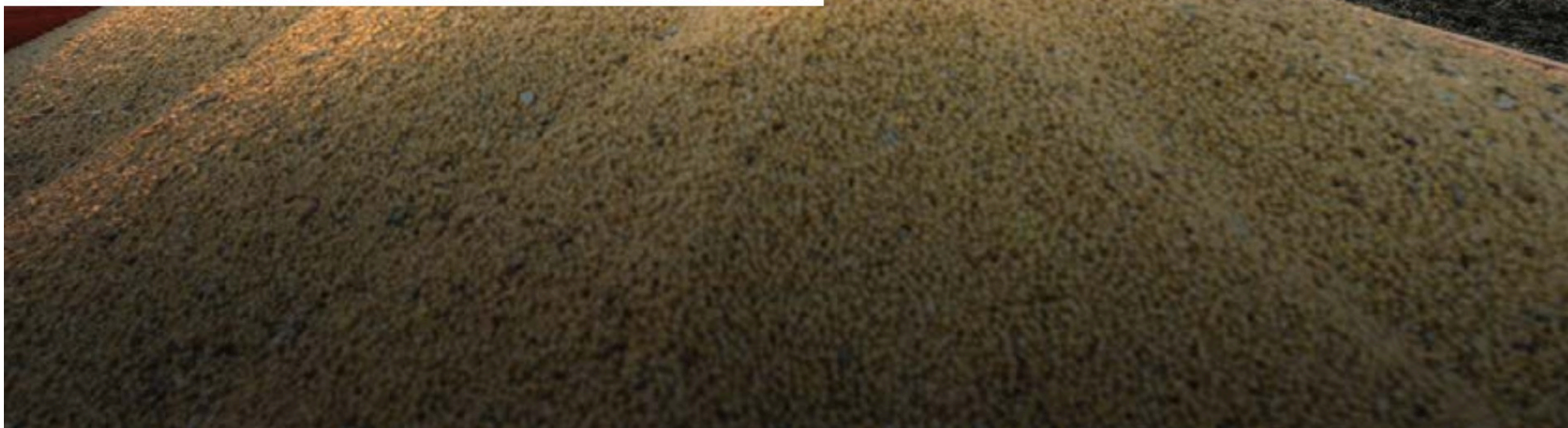
vantage-au.com

1800 4 Vantage





**Easier Farming with
precision**



CivilPro

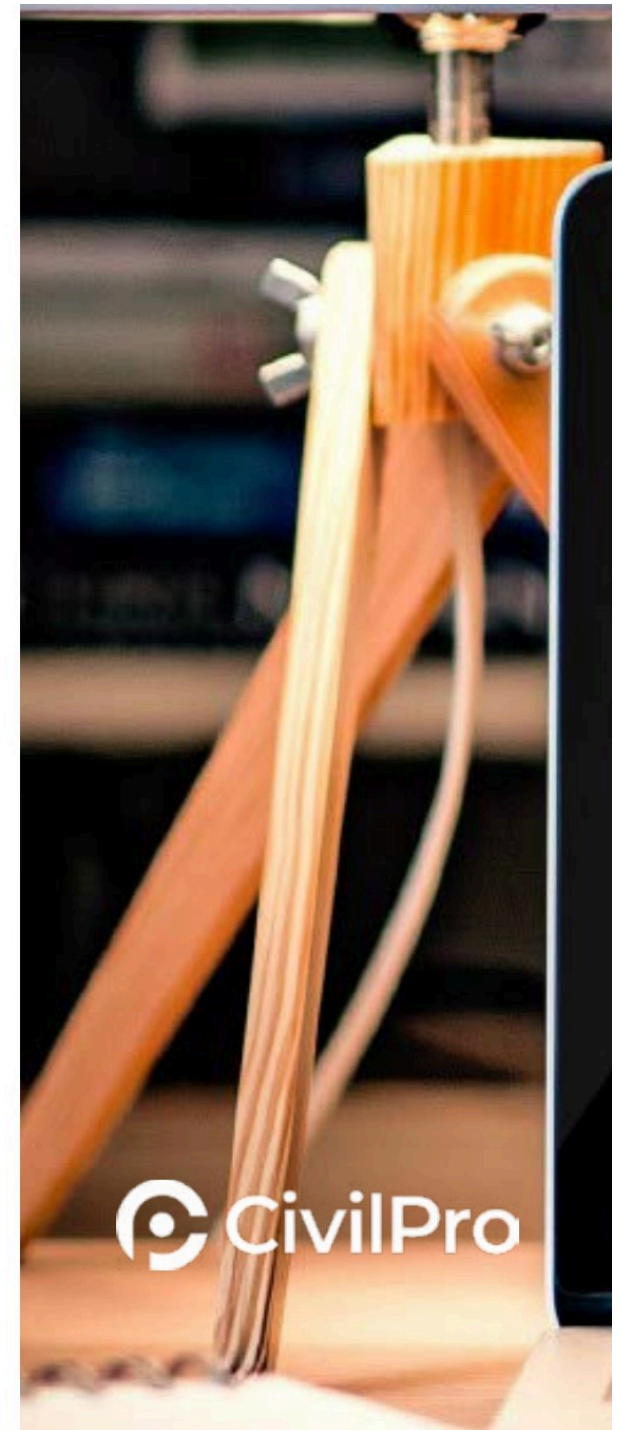
Blue Sky Contracting was founded by 'QA Legend' and CivilPro creator, Dennis Gascoigne. The Desktop was created by Dennis from his 'shed' as a side-project, and was first released in 2001. Since then, it has not only grown significantly – but it has become a mainstay of the Australian construction industry, supporting major infrastructure and small projects alike.

Blue Sky Contracting initially partnered with Herga Group in 2018 to release the Cloud version. However, in 2020, this partnership grew to incorporate all CivilPro technology (including the existing desktop), and a new company was founded: CivilPro Software Pty Ltd.

This partnership will take CivilPro into the future. It is a matching of small business ethic with the resources of a leading, national construction technology group – and it will ensure that CivilPro will become even bigger, better, and more exciting!

civilpro.com

1800 900 277



Build it once. Build it

Your One-Stop QA Solution

not only deliver a quality project, but that you can prove it and get paid for it.

No more waiting for months after a project is finished chasing documentation, or digging through finished work for missed tests – which just creates cost and cash flow issues that hurt your business.



Our Partners

CIVIL CONSTRUCTION

Trimble | CCF QLD, SA, VIC | Webbair | Blaxtair | Viewpoint | CivilPro | QMCA

BUILDINGS


Trimble | Viewpoint | AMCA | CivilPro | ASI | IDEA StatiCa

GEOSPATIAL

Trimble | Blaxtair | Viewpoint | Seco | ISNSW | ISV | GeoCounil | CSNSW

MINING

Trimble | AIMS

The background of the slide is a dark blue grid. Overlaid on this grid are various white and light blue icons representing technology and business concepts: a smartphone, a laptop, a globe with a grid, a Wi-Fi symbol, a mail icon, a shopping cart, a bar chart, a line graph, a magnifying glass, a padlock, a location pin, a person icon, a gear, and a group of people. A hand is visible holding a smartphone in the center-right of the image. The text is placed on the left side of the grid.

The industries we serve are changing at a rapid pace, offering new challenges and opportunities that need to be met with innovative technologies and efficient ways of working.

We continue to evolve as a group and by working closely with specially selected partners who can help us meet these challenges and develop new and innovative solutions designed specifically for the different industry's requirements.

We are lucky to work with a number of partners that fulfill the various criteria and have helped us become the businesses that we are today.

UPG, SITECH, BuildingPoint, Information Alignment, and CivilPro continue to develop long-term partnerships with clients and partners, working together to explore mutual opportunities for growth.

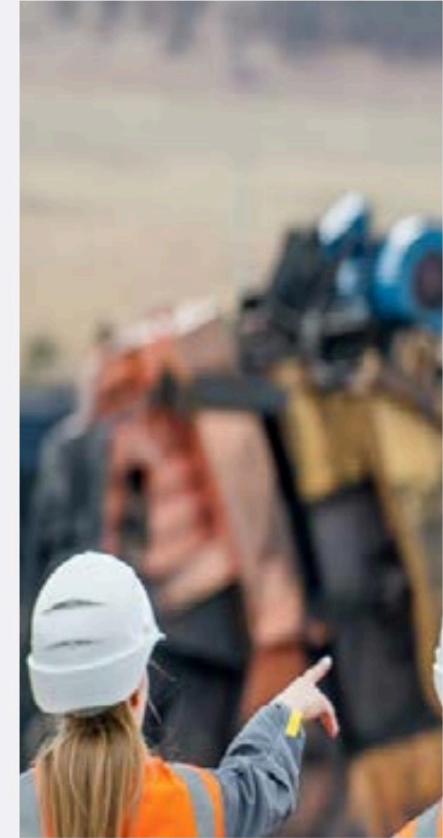
**Working
together
to help
you work
better.**

Agriculture



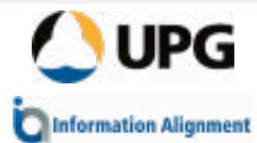
vantage
AUSTRALIA

Mining



UPG
Information Alignment

Geospatial



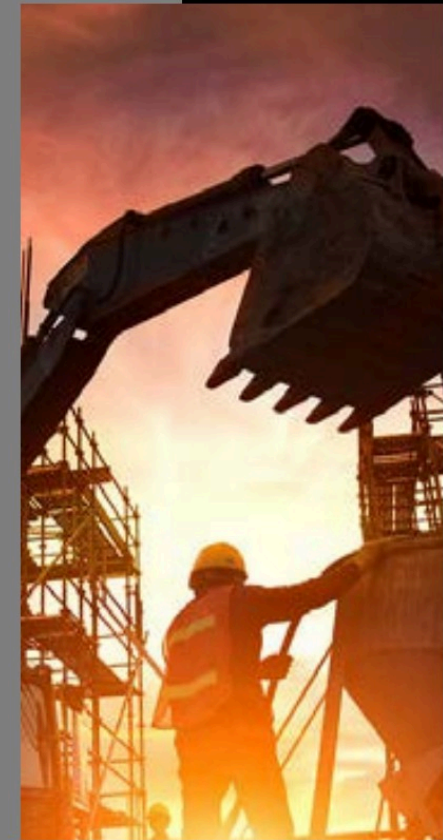
Transportation and Logistics



Natural Resources, Utilities & Govt.



Engineering and Construction



Queensland

33 - 35 Allison Street
Bowen Hills Q 4006

Rockhampton

Unit 3, 11 Sturt Street
Parkhurst Q 4702

Townsville

Unit 4, 42 Carmel Street
Garbutt Q 4814

Victoria

Unit 1, 6 Garden Road
Clayton Vic 3168

Western Australia

2/28 Hasler Road
Osborne Park WA 6017
(UPG and BuildingPoint
Office)

Unit 1, 7 Gympie Way
Willetton WA 6148
(Information Alignment Office)

South Australia

13 Marlow Road
Keswick SA 5035

Tasmania

2 Chardonnay Drive
Berriedale TAS 7011

308 Rocherlea Road
Rocherlea Tas 7248

New South Wales

2 Voyager Circuit
Glendenning NSW 2761
(UPG and BuildingPoint Office)

Unit 2, 27 Mt Erin Road
Campbelltown NSW 2560
(UPG and BuildingPoint Office)

Suite 8, 50 Reservoir Street
Surry Hills NSW 2010
(UPG and BuildingPoint Office)

25 Cook Drive
Coffs Harbour NSW 2450

SITECH Solutions

2 Voyager Circuit
Glendenning NSW 2761

4/19-25 Kembla Street
Fyshwick ACT 2609

New Zealand**Auckland**

43A Rosebank Road
Avondale

Christchurch

Unit 2, 1 Show Place
Addington 8024