



Seafloor™ HYDRONE

Uncrewed Surface Vessel for Hydrographic Survey Applications



TRANSPORTATION AND DEPLOYMENT

HyDrone™ is one person portable, allowing easy access to remote and dangerous areas.

- Made from High-quality marine grade materials.
- Easily disassembles for transport and shipping.

SEMI-AUTONOMOUS AND REMOTE CONTROL

Controlling the HyDrone™ is easy using a long-range, remote control unit (RCU).

- Up to 1km range.
- Six hours survey endurance.
- Maneuver easily with powerful differential thrusters.

SOFTWARE COMPATIBILITY

HyDrone™ is compatible with hydrographic data acquisition software such as Hypack, Carlson, EPOCH, Leica, Sokkia, Topcon, and Trimble.

CUSTOMIZATION

- The desired depth sounder can be pre-installed or the HyDrone™ can be supplied ready to accept existing equipment from the user's surveypool.
- HyDrone™ can be outfitted with singlebeam, multibeam, sidescan sonar systems and ADCPs .
- Maintain survey line & fixed heading for ADCP Surveys.
- For professional hydrographic survey requirements, HyDrone™ may be tailored for individual customer specifications. Additional features are available, please contact your Seafloor representative.

The HyDrone™ is a lightweight, unmanned surface catamaran developed for hydrographic survey applications.

This highly-economical platform provides the same survey results as more expensive remote-controlled systems.



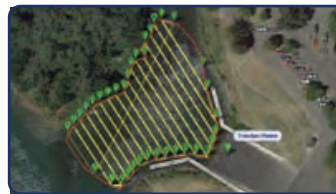
One Person Portable



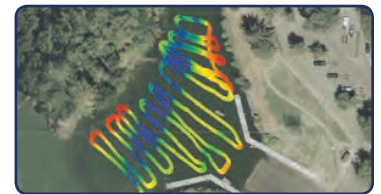
Differential Thrusters



AutoNav™ Control System



Preplanned route using Mission Planner



Resulting survey data via Mission Planner



HydroLite-TM™ with Trimble GPS and data collector



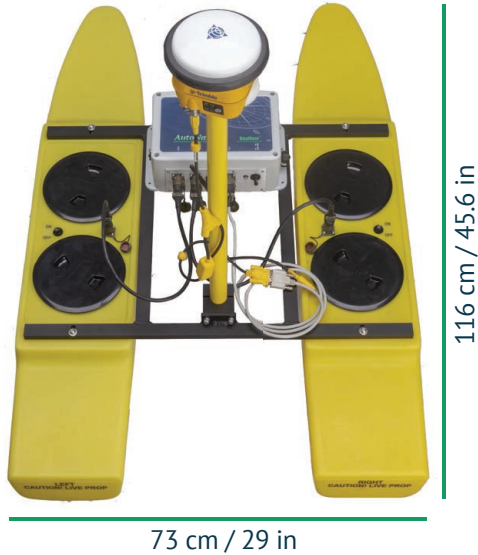
HyDrone™ ASV with Trimble SPS 585 and TSC3

Seafloor Systems, Incorporated | 4475 Golden Foothill Parkway | El Dorado Hills, CA 95762 | USA

info@seafloor | www.seaflorsystems.com

HyDrone™

Unmanned Surface Vehicle



Specifications

Typical Survey Speed	2 kn
Top Speed	4 knots RCV
Hull Length	116 cm / 45.6 in
Hull Width	21cm / 8.2 in
Hull Material	UV Resistant HDPE
Hatches	4 x 6" Twist-Out Watertight Closure
Frame	Powder Coated Aluminum
Hardware	Stainless Steel
Empty Hull Weight & Batteries	9.8 kg / 25 lbs
Battery Endurance	6 Hours at Survey Speed (Field Swappable Batteries)
Payload	15 kg / 35 lbs
Power	2x 14.8 VDC 16 Ah Battery LiPo
Motor	2 x Brushless Thruster
R/C	2.4 GHz
Remote Range	Up to 1km

Instrumentation Options

HyFi Plus™	AutoNav™ Control System
AutoNav Plus™	HydroLite™ Pole Kit
HydroLite-Plus™	SonarMite™ MILSpec Echosounder
PC Laptop	
RTK GPS	