

Seafloor™ TRIDENT

Portable Uncrewed Surface Vessel for Multibeam Hydrography



The **Trident USV™** is a remote platform purpose-built for multibeam hydrographic surveys. This trimaran collects high resolution depth data via remote control or preplanned autonomous routes, and reaches areas inaccessible by larger survey vessels. The moonpool of the center hull allows for flexible integration of several compact multibeam systems, and the outriggers detach for easy transport. Extend the capabilities and flexibility of your surveys with the Trident USV.

KIT INCLUDES

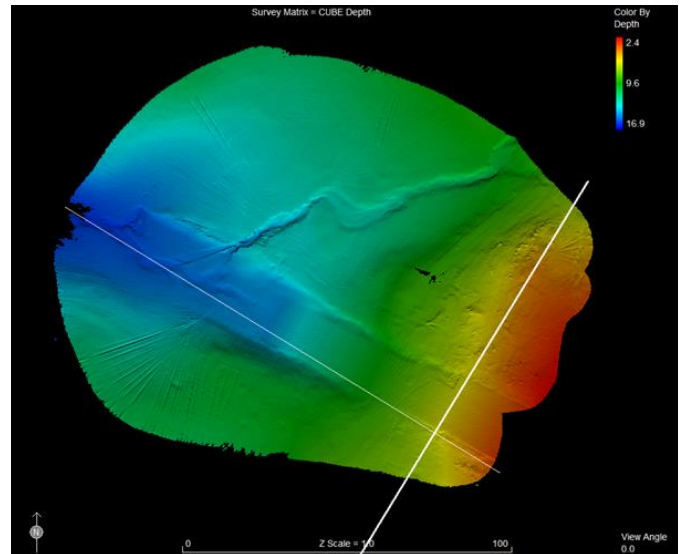
- ▶ Aluminum center hull and two HDPE outriggers
- ▶ Compact multibeam sonar system; customer specified
- ▶ Two servo thrusters
- ▶ 3 x 14.8 VDC 16,000mAh LiPo batteries
- ▶ Shipping Crate

FEATURES

- ▶ Outfitted with compact multibeam sonar system of choice
- ▶ Maneuverable servo thrusters
- ▶ Detachable outriggers for transport
- ▶ Field-swappable batteries for extended operation time
- ▶ One-person setup

SPECIFICATIONS

- | | |
|--------------------------------|----------------------------------------------|
| ▶ Length: 1.3m / 51.2in | ▶ Remote Range: Up to 1 km |
| ▶ Width: 0.88m / 34.6in | ▶ Top Speed: 2.7kn / 1.39m/s |
| ▶ Weight: 31.8kg / 70 lbs | ▶ Survey Speed: 2 kn / 1.03m/s |
| ▶ Motor: 2x brushless thruster | ▶ Battery Endurance: 4 hours at survey speed |



Digital Terrain Map of Lakebed Using an R2Sonic Multibeam System



Flexible Multibeam System Integration

Seafloor Systems, Incorporated | 4415 Commodity Way | Shingle Springs, CA 95682 | USA

info@seafloorsystems.com | www.seafloorsystems.com