



UPG (Ultimate Positioning Group)  
AllTerra  
SITECH Construction Systems  
SITECH Solutions  
SITECH New Zealand  
BuildingPoint Australia  
BuildingPoint New Zealand  
Information Alignment  
Vantage Australia  
CivilPro



## Contents

3	How we started
4	Trimble
6	Our Commitment
8	Customer Service
10	Capability
12	UPG (Ultimate Positioning Group)
14	SITECH
16	BuildingPoint
18	AllTerra
20	Information Alignment
22	Vantage
24	CivilPro
26	Our Partners





# How We Started

The genesis of our business dates back to 1888 when Alphonse Herga opened a watch makers business in Brisbane. From the early 1900's the Group has been run by the Bright Family and a fourth generation of the family is still leading the business today.

For over 130 years the Group has been involved in the sales and support of Surveying Instruments in Australia. In the last 30 years we have grown from the core Surveying business to include a number of multi-faceted technology businesses encompassing hardware, software solutions, consulting, and solutions development.

We are proud to be the exclusive Trimble distribution Partners for Geospatial, Civil Engineering and Construction Solutions within our Territories.

Headquartered in Brisbane, we have grown to include 15 Regional Offices and more than 330 employees, Servicing Australia, New Zealand, and Papua New Guinea.



Trimble is an industrial technology company, concentrated on helping the world work, better. Our technology enables jobs to get done more precisely and accurately so you can build, construct, grow and move the things we need to live our lives and build future communities.

### **Transforming the way the world works**

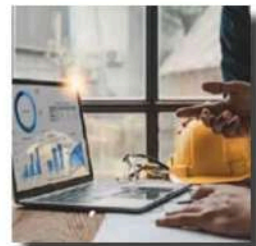
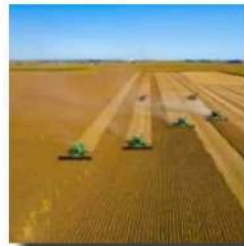
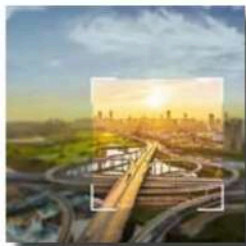
By connecting the physical and digital worlds through hardware, software, and services across [agriculture](#), [construction](#), [geospatial](#), [buildings](#), and [transportation](#). Trimble creates and provides solutions that enable our customers to do their jobs better - more successfully, efficiently, and safely, all while saving money.

### **Shaping a sustainable future**

At Trimble, we are transforming the way the world works to shape a sustainable future for our customers, our employees and our planet.

### **Our sustainability priorities are integrated into our strategy**

It's threaded throughout our products and our culture. It guides our innovations and investments. It drives us to build resilience for our company, to empower our people, and to lead with integrity in all that we do.



# What Sets Us Apart?



## Construction

Deliver projects with more control through connected solutions that improve productivity, quality, transparency, safety, and sustainability.



## Geospatial

Transform data into real-world intelligence using the most progressive, reliable, and accurate tools in precision technology.



## Government

Provide the services constituents expect today and tomorrow with solutions that can help you manage projects from conception to completion.



## Agriculture

Farming is hard. The power of Trimble agriculture technologies combines simplicity with innovation to make it easier.



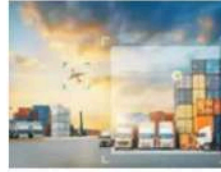
## Natural Resources

Increase efficiencies, reduce costs and step up sustainability commitments with intelligent solutions that deliver actionable information.



## Infrastructure

Plan, design, build, and operate projects and programs with a suite of products and services that help you make informed decisions and meet budget, sustainability and community resilience goals.



## Transportation

Create a more connected supply chain with solutions that improve decision-making and productivity while shrinking environmental impact.



## Utilities

Achieve resilient and sustainable utility networks by driving efficiencies in investment planning, design, construction, operations, and maintenance.





# Our Commitment

## HEALTH & SAFETY

Throughout the Group we integrate our core responsibilities of Safety, Environment and Quality into every part of our day-to-day operations. We are passionate about maintaining the health and safety of our people, our customers, and visitors.

Under the direction of our senior safety managers you can be assured that all processes undertaken on your behalf will be done to the highest of safety standards.

## ENVIRONMENT

The Group, together with Trimble, recognises that climate change is a significant global challenge and we are committed to continually improving the environmental performance of our business operations.

It is our policy to ensure that any work carried out is within the scope of the business and is conducted in an environmentally aware and responsible manner and complies with all applicable regulatory requirements.

## QUALITY

It is Company policy to offer and deliver products and services featuring quality, reliability and value, consistent with the needs of our customers. This is achieved through the application of an effective business management system.

We continue to adopt improvement of work methods and processes, respond constructively and promptly to product quality and service issues, ensure agreed commitments are delivered and always achieved if not exceeded, and with the support of our suppliers provide exceptional customer value through continuous improvement.

# Customer Service

Customer support is more than just providing answers; it's an important part of the promise the Trimble brand makes to its customers.

Today's customer service goes far beyond the traditional telephone support agent. That's why we're also available via email, web, and social media. We have implemented dedicated customer service numbers across the board, supported by a team with well over 100 years combined experience in the Agriculture, Civil Construction, Geospatial, Mining, and Building industries.

Across the group we continue to provide our clients with the level of service and support they expect and deserve.

<ul style="list-style-type: none"><li>• UPG 1800 800 UPG 1800 800 874 upgsolutions.com</li></ul>	<ul style="list-style-type: none"><li>• SITECH Construction Systems 1800 SITECH 1800 748 324 sitechcs.com</li></ul>	<ul style="list-style-type: none"><li>• SITECH Solutions +61 2 6788 2155 sitechsolutions.com.au</li></ul>	<ul style="list-style-type: none"><li>• BuildingPoint 1800 900 BPA 1800 900 272 buildingpoint.com.au</li></ul>	<ul style="list-style-type: none"><li>• Information Alignment +61 8 9205 6300 inapl.com</li></ul>	<ul style="list-style-type: none"><li>• Vantage Australia 1800 4Vantage 1800 482 682 vantage-au.com</li></ul>
<ul style="list-style-type: none"><li>• AllTerra 0800 AllTerra 0800 2558 3772 allterra.co.nz</li></ul>	<ul style="list-style-type: none"><li>• SITECH Construction New Zealand 0800 4 SITECH 0800 4748 324 sitechnz.co.nz</li></ul>		<ul style="list-style-type: none"><li>• BuildingPoint NZ 0800 276 468 buildingpoint.co.nz</li></ul>	<ul style="list-style-type: none"><li>• CivilPro 1800 900 CPS 1800 900 277 civilpro.com</li></ul>	









### **Capability to Service Australia, New Zealand, and Papua New Guinea**

Mobile workforce



### **Office Locations**

Brisbane, Toowoomba,  
Rockhampton, Townsville, Ayr,  
Sydney, Melbourne, Adelaide,  
Darwin, Tasmania, Perth, New  
Zealand



### **Over 330 Staff**

Support, Sales, Service, Surveying,  
Technology, IT, Logistics

An unparalleled portfolio of equipment and technology solutions, unmatched after-sales service and 130+ years supporting our customers

# Capability

Over the last few years we have implemented substantial change to drive a culture where safety and customers are forefront in our organisation. We have a genuine desire to understand our customers' needs enabling us to deliver the solutions they want, when they want them, wherever they are.

We are proud of our 130 year legacy of supporting our customers and our reputation for meeting commitments. We have the most comprehensive range of Trimble software and solutions to support you.

We have high quality people, second-to-none service and sales facilities combined with rental and maintenance solutions, all forming part of an unmatched depth of offering.

By genuinely understanding our customers' needs we know we can bring all this together to assist our customers achieve success.

# UPG

(ULTIMATE POSITIONING GROUP)

At Ultimate Positioning Group (UPG), we bring the pioneering precision of Trimble technology to Australia's forefront. As the authorised distribution partner for Trimble, the global leader in precision positioning solutions, UPG is dedicated to empowering industries across Australia with cutting-edge geospatial technology.

From construction to agriculture, surveying to utilities, UPG provides a comprehensive range of Trimble products and services tailored to meet the unique needs of our diverse clientele. Our expert team ensures seamless integration and optimal performance, enabling our customers to achieve unprecedented levels of accuracy and efficiency in their projects.

Backed by Trimble's legacy of innovation and reliability, UPG is committed to delivering superior solutions that drive success for our clients. Join us in harnessing the power of precision with Trimble technology and elevate your projects to new heights of excellence.

[upgsolutions.com](http://upgsolutions.com)  
1800 800 874







**With Trimble Geospatial, You  
Can Make Your Mark with  
Confidence**



**Trimble**

*Authorised Distribution Partner*

# SITECH

SITECH Construction Systems is your premier destination for Trimble precision construction technology across Queensland, South Australia, Victoria, Tasmania, Northern Territory and New Zealand. As the authorised dealer for Trimble, the global leader in construction solutions, SITECH is committed to delivering unparalleled precision, productivity, and profitability to your projects.

From advanced machine control systems to cutting-edge construction software, SITECH offers a comprehensive suite of Trimble products and services tailored to meet the unique needs of contractors and construction professionals. Whether you're involved in earthworks, road construction, or building infrastructure, SITECH empowers you with the tools and support you need to succeed.

With a team of experts dedicated to your success and Trimble's proven track record of innovation and reliability, SITECH is your trusted partner for unlocking the full potential of construction technology. Join us in transforming your projects with precision and efficiency – let's build the future together.

<a href="http://sitechcs.com">sitechcs.com</a>	<a href="http://sitechnz.co.nz">sitechnz.co.nz</a>	<a href="http://sitechsolutions.com.au">sitechsolutions.com.au</a>
1800 748 324	0800 4748 324	+61 2 6788 2155





An aerial photograph of a large construction or industrial site. The foreground is dominated by a vast, flat, brownish-yellow area, likely a dirt or sand pit, with visible tire tracks. In the middle ground, there's a cluster of vehicles including several yellow excavators, a white truck, and various cars. To the right, there are several large, rectangular structures with green roofs, possibly storage containers or small buildings. The background shows a mix of trees with autumn foliage in shades of yellow, orange, and red, and a paved road with more vehicles. A white text box is overlaid on the left side of the image.

**Get the job done right**

 **Trimble**  
Authorised Dealer

# BuildingPoint

## **From the office, to the job site, and everywhere in between**

BuildingPoint Australia is your gateway to cutting-edge Trimble construction solutions throughout Australia and New Zealand. As the authorised dealer for Trimble, the global leader in construction technology, BuildingPoint is dedicated to revolutionising the way you build.

From innovative layout solutions to advanced construction software, BuildingPoint offers a comprehensive range of Trimble products and services designed to optimise productivity, accuracy, and collaboration on your projects. Whether you're in commercial construction, infrastructure development, or residential building, BuildingPoint empowers you to achieve unprecedented levels of efficiency and precision.

Backed by Trimble's unmatched reputation for innovation and reliability, BuildingPoint Australia is committed to delivering exceptional customer service and support every step of the way. Join us in reshaping the future of construction with Trimble technology – let's build smarter, faster, and better together.

[buildingpoint.com.au](http://buildingpoint.com.au)  
1800 900 272

[buildingpoint.co.nz](http://buildingpoint.co.nz)  
0800 276 468







**Design**

**Detail**

**Fabricate**

**Construct**

**Products for Every  
Phase of Your Business**

 **Tekla**®

 **SketchUp**  
Distributor

 **Trimble**  
Authorised Dealer

# ALLTERRA

Welcome to AllTerra, your premier destination for Trimble precision solutions in New Zealand. As the authorised distribution partner for Trimble, a global leader in advanced positioning technology, AllTerra is dedicated to delivering unparalleled accuracy and efficiency to your projects.

From land surveying to construction, agriculture to geospatial mapping, AllTerra offers a comprehensive range of Trimble products and services tailored to meet the diverse needs of industries across New Zealand. Our expert team provides personalised support and guidance to ensure seamless integration and optimal performance of Trimble technology in your workflows.

Backed by Trimble's legacy of innovation and reliability, AllTerra is committed to empowering our customers with the tools and knowledge they need to succeed. Partner with us to unlock the full potential of precision in your projects and experience the difference with AllTerra – where every measurement matters.

[allterra.co.nz](http://allterra.co.nz)  
0800 2558 3772





**With Trimble Geospatial, You  
Can Make Your Mark with  
Confidence**

 **Trimble**



# Information Alignment

Enter the realm of enhanced mining operations with Information Alignment (IA), an Australian-based company at the forefront of enterprise-wide information systems for the mining industry. Specialising in the development of comprehensive systems for mine production, processing operations, human resource management, and web platforms, IA revolutionises the way mining enterprises operate and thrive.

IA's suite of systems seamlessly integrates data from various sources, providing a holistic view of mining operations regardless of data origin. This capability, combined with Trimble's cutting-edge geospatial solutions, delivers unparalleled insights that drive increased mine productivity and profitability. By aggregating, analysing, and presenting information effectively, IA empowers decision-makers across planning, operations, and finance to make informed decisions that optimise mine performance.

With a vision to enhance mine productivity, profitability, and safety through improved reporting and the utilisation of geospatial technology, IA stands as a trusted partner in the mining industry. Experience the power of enterprise-level systems that unlock data and metrics for a complete view of mining operations – partner with Information Alignment and embark on a journey towards mining excellence.

[inapl.com](http://inapl.com)

+61 8 9205 6300





A high-angle photograph of two miners in a quarry. They are wearing brown work clothes, high-visibility yellow-green vests, and hard hats (one yellow, one white). They are both pointing with their white-gloved hands towards a tablet computer held by the miner in the white hard hat. The ground is covered in loose rocks and dirt. A white text box is overlaid on the left side of the image.

## Experts in Mining Data and Management Systems



# Vantage Australia

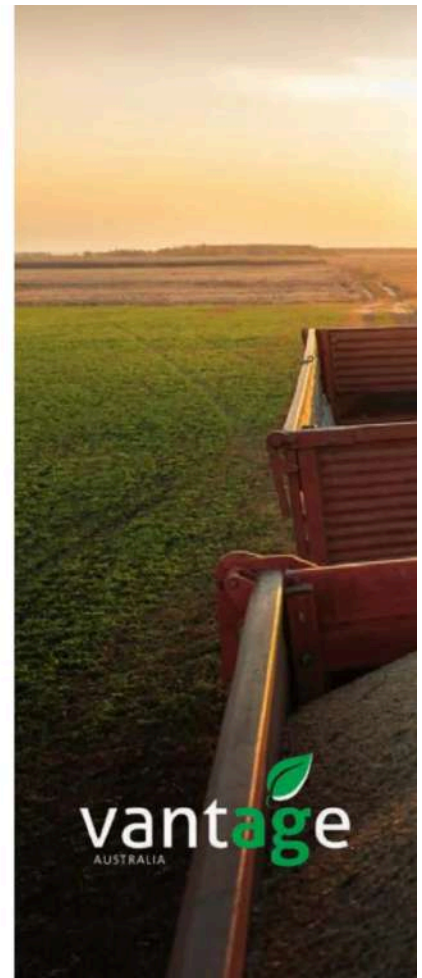
Welcome to Vantage Australia, your premier destination for Trimble solutions in Australia. As the authorised partner for Trimble, a global leader in advanced technology, Vantage is dedicated to empowering your vision with cutting-edge geospatial and construction solutions.

Whether you're in land surveying, construction, or precision agriculture, Vantage offers a comprehensive suite of Trimble products and services tailored to your unique needs. From state-of-the-art GNSS receivers to innovative machine control systems, we provide the tools and expertise to enhance efficiency, accuracy, and productivity in your projects.

With a commitment to excellence and a focus on customer satisfaction, Vantage ensures seamless integration and optimal performance of Trimble technology. Partner with us to unlock the full potential of your projects and achieve success with confidence. Experience the power of precision with Vantage-au – where your vision becomes reality.

[vantage-au.com](http://vantage-au.com)

1800 482 682







## Easier Farming with precision



# CivilPro

Welcome to CivilPro, your premier destination for cutting-edge civil engineering software solutions. Designed by industry experts, CivilPro software is engineered to streamline and optimise every aspect of civil engineering projects, from design and planning to construction and maintenance.

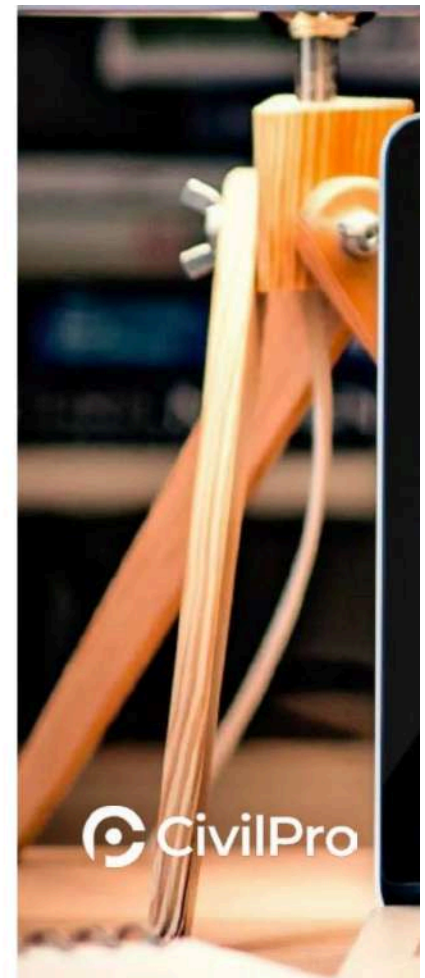
With a user-friendly interface and powerful features, CivilPro empowers civil engineers, contractors, and project managers to efficiently manage projects of any scale. Whether you're involved in road construction, site development, or infrastructure projects, CivilPro provides the tools you need to succeed.

From detailed design functionalities to comprehensive project management capabilities, CivilPro offers a complete suite of software solutions tailored to meet the unique needs of civil engineering professionals. With CivilPro by your side, you can enhance collaboration, improve efficiency, and deliver projects on time and within budget.

Join the ranks of satisfied users who have experienced the transformative power of CivilPro software.

[civilpro.com](https://civilpro.com)

1800 900 277





Build it once. Build it

# Your One-Stop QA Solution

not only deliver a quality project, but that you can prove it and get paid for it.

No more waiting for months after a project is finished chasing documentation, or digging through finished work for missed tests – which just creates cost and cash flow issues that hurt your business.

Clunky manual systems

Client Communication Roadblocks

BUILDINGS

RAILWAY

TUNNELS

DEVELOPMENTS

BRIDGES

AIRPORTS & HARBOURS

ROADS

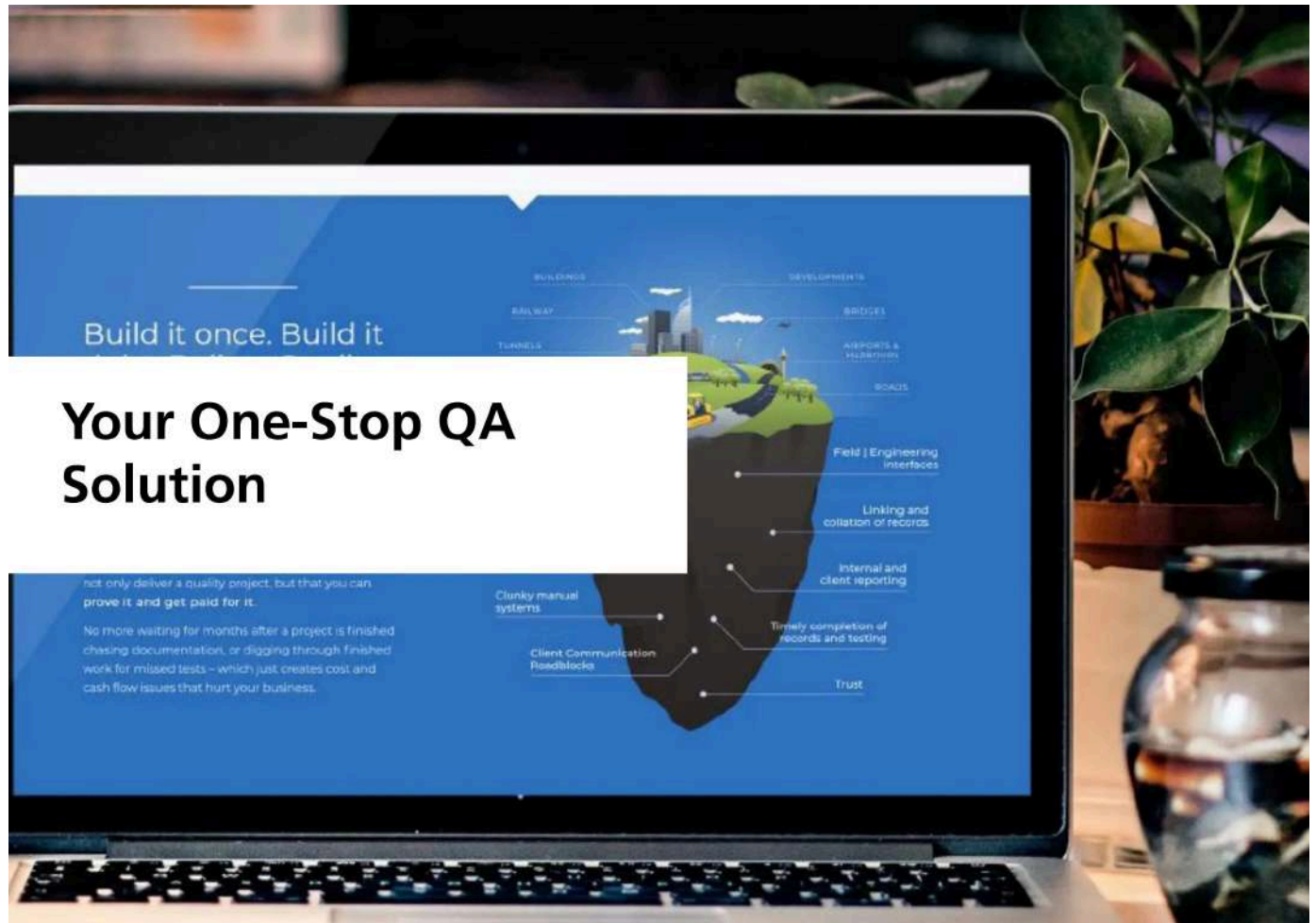
Field / Engineering interfaces

Linking and collation of records

Internal and client reporting

Timely completion of records and testing

Trust



# Our Partners

## CIVIL CONSTRUCTION

Trimble | CCF QLD, SA, VIC | Webbair | Blaxtair | Viewpoint | CivilPro | QMCA

## BUILDINGS

Trimble | Viewpoint | AMCA | CivilPro | ASI | IDEA StatiCa

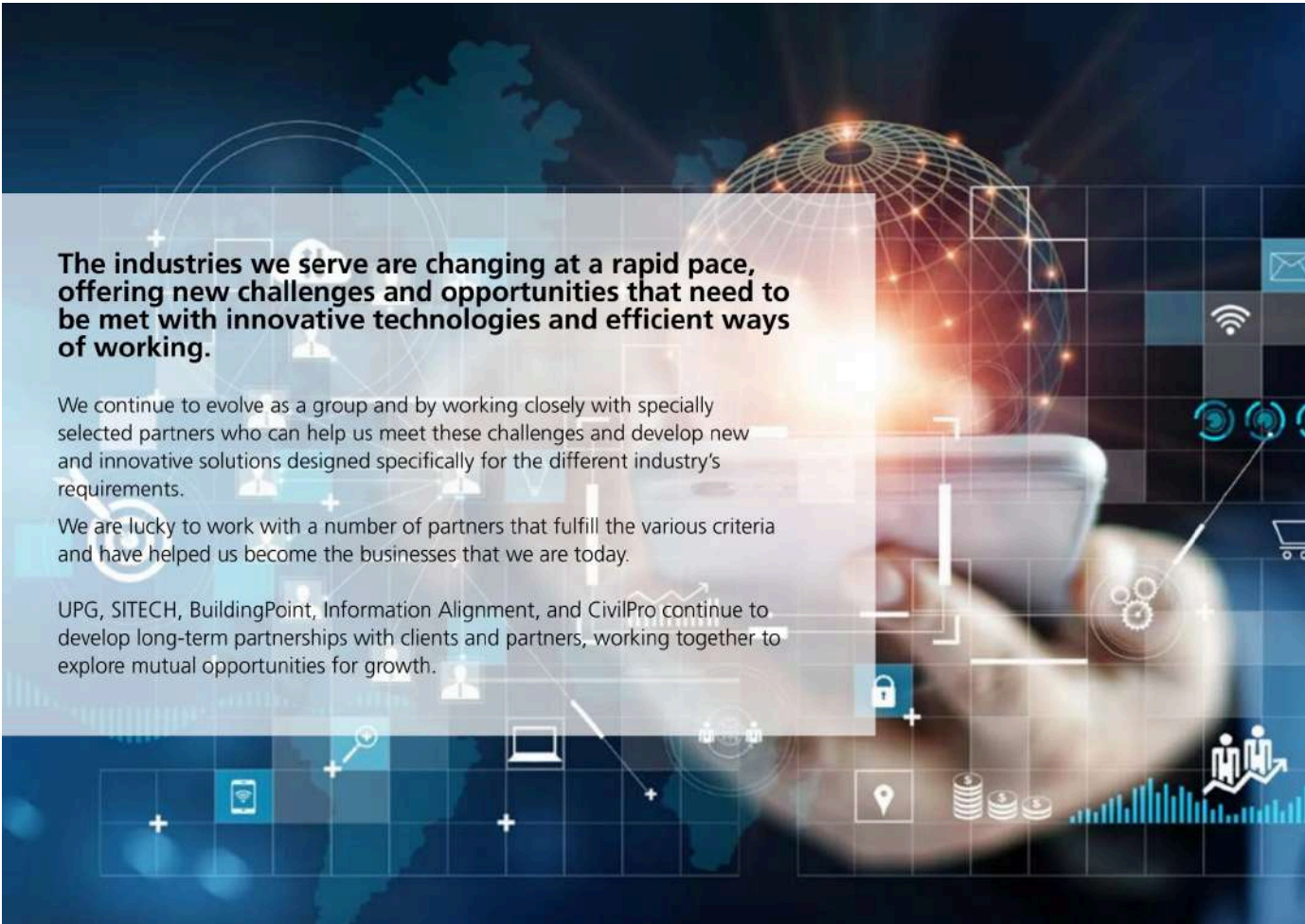
## GEOSPATIAL

Trimble | Blaxtair | Viewpoint | Seco | ISNSW | ISV | GeoCouncil | CSNational

## MINING

Trimble | AIMS





**The industries we serve are changing at a rapid pace, offering new challenges and opportunities that need to be met with innovative technologies and efficient ways of working.**

We continue to evolve as a group and by working closely with specially selected partners who can help us meet these challenges and develop new and innovative solutions designed specifically for the different industry's requirements.

We are lucky to work with a number of partners that fulfill the various criteria and have helped us become the businesses that we are today.

UPG, SITECH, BuildingPoint, Information Alignment, and CivilPro continue to develop long-term partnerships with clients and partners, working together to explore mutual opportunities for growth.

**Working  
together  
to help  
you work  
better.**

Agriculture



**vantage**  
AUSTRALIA

Mining



**UPG**  
Information Alignment



Geospatial



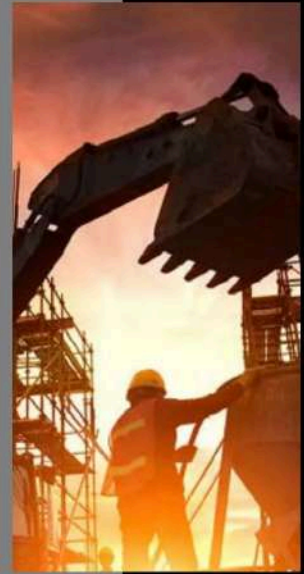
Transportation and Logistics



Natural Resources, Utilities & Govt.



Engineering and Construction



**Queensland  
Brisbane**

33 - 35 Allison Street  
Bowen Hills Q 4006

**Toowoomba**

1A / 13 Carrington Road  
Toowoomba Q 4350

**Rockhampton**

Unit 3, 11 Sturt Street  
Parkhurst Q 4702

**Townsville**

Unit 4, 42 Carmel Street  
Garbutt Q 4814

**Ayr**

4 Bird Street  
Ayr Q 4807

**Victoria**

Unit 1, 6 Garden Road  
Clayton Vic 3168

**Western Australia**

2/28 Hasler Road  
Osborne Park WA 6017

**Equus Building**

Suite 178, 580 Hay Street  
PERTH WA 6000

**Northern Territory**

22 Mander Road  
Pinelands NT 0829

**South Australia**

13 Marlow Road  
Keswick SA 5035

**Tasmania**

2 Chardonnay Drive  
Berriedale TAS 7011

308 Rocherlea Road  
Rocherlea Tas 7248

**New South Wales**

2 Voyager Circuit  
Glendenning NSW 2761

**Unit 2, 27 Mt Erin Road**

Campbelltown NSW 2560  
(UPG and BuildingPoint Office)

Suite 8, 50 Reservoir Street  
Surry Hills NSW 2010

150 Jerilderie Street  
Jerilderie NSW 2716

25 Cook Drive  
Coffs Harbour NSW 2450

**SITECH Solutions**

2 Voyager Circuit  
Glendenning NSW 2761

4/19-25 Kembla Street  
Fyshwick ACT 2609

**New Zealand  
Auckland**

43A Rosebank Road  
Avondale

**Christchurch**

Unit 2, 1 Show Place  
Addington 8024